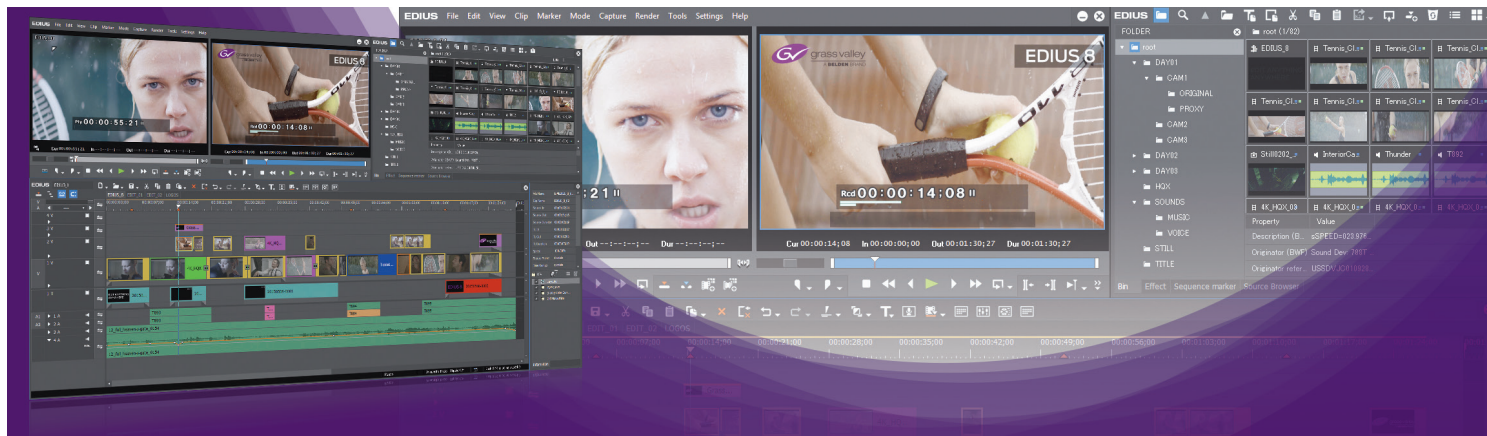


EDIUS Pro 8

Nonlinear Editing Software



“No other video editing system can handle the variety of file formats we receive.”

Grant Salinger, Managing Director, Motionlink

When an editor has to wait for technology, creativity suffers. That doesn't happen with EDIUS Pro 8. EDIUS Pro 8 means more formats and more resolutions in real time for the ability to *Edit Anything, Fast*. EDIUS Pro 8 is the perfect finishing tool for professional productions, including documentary and 4K theatrical productions.

With more creative options and real-time, no-render editing of all popular SD, HD and even 4K formats, EDIUS Pro 8 is *THE* most versatile and fastest non-linear editing software available.

EDIUS Pro 8 from Grass Valley, a Belden Brand, gives you real-time editing of multiple formats and frame rates all on the same timeline. That means you can edit faster... and make the time to be more creative.

More Formats, Better Workflows

EDIUS Pro 8 includes native support for all commonly used file formats, including Sony XDCAM, Panasonic P2 and Canon XF and EOS movie formats. For post-production work you can use Grass Valley's high-performance intermediate 10-bit codec, HQX, and there is an option available to add the Avid DNxHD codec (included as standard in the Workgroup version).

Where EDIUS Pro 8 really shines, however, is with its fast and comprehensive implementation of newer file formats, for example Sony XAVC (Intra/Long GOP)/XAVC S, Panasonic AVC-Ultra, and Canon XF-AVC. With EDIUS Pro 8, you'll always be able to edit, whatever format comes your way.

You Buy It, You Keep It — No Subscription Fees

Unlike other NLE software providers, Grass Valley believes that you should own what you pay for. With EDIUS Pro 8, there are no ongoing subscription fees. When you purchase EDIUS Pro 8, you get a permanent license with free updates throughout the life of EDIUS Pro 8.x.

Plus, you can install EDIUS Pro 8 on two machines, so you can have it with you on your laptop (using proxy mode on a less powerful notebook, if needed), as well as on a more powerful desktop machine. That way, you can take your edit suite on location with you.

64-bit & 4K

Designed as a native 64-bit application for Windows 7, Windows 8/8.1 and Windows 10, EDIUS Pro 8 takes full advantage of up to 512 GB system memory (for Windows 8/8.1/10 Enterprise and Pro) or up to 192 GB (for Windows 7 Ultimate, Enterprise, and Professional) for super-intensive media operations, especially layering, 3D, multicam and multitrack 4K editing.

EDIUS Pro 8 is optimized for Intel's Quick Sync Video, a feature of all current Core processors (Core i7, Core i5 and Core i3) and especially useful for video editing because it significantly accelerates MPEG-2 and H.264 encoding.

EDIUS Pro 8 has been further enhanced to use Intel Quick Sync Video for H.264 decoding to give you super-smooth H.264 playback, including 4K.



“Real-time editing capability is a big deal. It allows me to focus on storytelling instead of ‘working’ an interface... and storytelling is at the core of what we do. In fact, I’d say the best feature of EDIUS is the play button. The play button works, and it works every single time it’s used. It’s no surprise that the EDIUS logo IS the play button.”

TheFrank Aldana, Director/Editor/VFX/Voiceover artist, Red Ei8ht Inc.

A Choice of Hardware I/O

Grass Valley designs and manufactures high-quality desktop I/O hardware for EDIUS Pro 8:

- STORM 3G Elite: HD-SDI I/O + HDMI I/O+ analog I/O + RS-422 control
- STORM 3G: HD-SDI I/O + HDMI output + RS-422 control
- STORM Mobile: HDMI I/O + analog I/O
- STORM Pro: HD-SDI I/O + HDMI output

In addition EDIUS Pro 8 supports I/O hardware from the following third-party vendors:

- Blackmagic Design
 - **PCI Express:** DeckLink SDI, DeckLink Studio 2, DeckLink SDI 4K, DeckLink Studio 4K, DeckLink 4K Extreme
 - **USB 3.0:** UltraStudio SDI, UltraStudio Pro
 - **Thunderbolt:** Intensity Extreme, UltraStudio Mini Monitor/Recorder, UltraStudio Express, UltraStudio 4K
 - Note:** RS-422 control and 4K 50p/60p preview not supported with listed Blackmagic Design hardware.
- Matrox
 - MXO2 LE, MXO2 mini, MXO2, MXO2 Rack, Mojito MAX
 - Note:** Windows 7 support only (Matrox 7.7.2 driver). Windows 8/10 not currently supported.
- AJA Video Systems
 - KONA 4, KONA 3G, KONA LHi (all output only)
 - Note:** 4K 50p/60p preview not supported with listed AJA KONA hardware.

For even more power and creative control during editing, EDIUS Pro 8 supports a number of third-party software plug-ins for more sophisticated titling, additional video and audio effects, keying and stabilization.

A list of third-party titling software and effects plug-ins is available on our website.

Unrivaled Mixed-Format Editing

Featuring unrivaled real-time video transcoding technology, EDIUS Pro 8 converts between HD and SD resolutions, aspect ratios and frame rates — all

in real time. You can edit in HD and place 4:3 SD video on the timeline, mix NTSC and PAL sources, add 4K or combine them all into projects in other resolutions and frame rates without wasting a single moment on conversion or rendering.

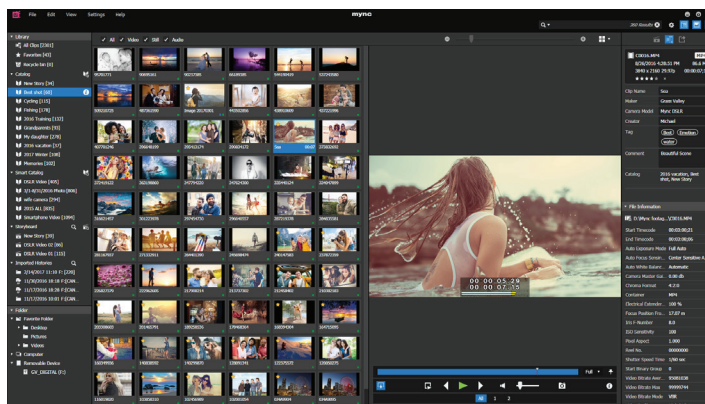
EDIUS Pro 8 supports resolutions from 24x24 to 4Kx2K, all on the same timeline, even in nested sequences, all in real time.

Multiplatform Delivery

Finishing in a variety of formats is easy with EDIUS Pro 8. Output resolutions can be customized and then saved with a variety of file wrappers — including QuickTime and Windows Media — for distribution to professional and consumer systems.

Mync

New for EDIUS Pro 8, Mync is a powerful new tool which allows you to manage all your video, audio and still image assets in preparation for editing in EDIUS. Mync is smart — when you connect a removable drive or card reader to your system, it will automatically detect supported formats and display them in the clip bin window.



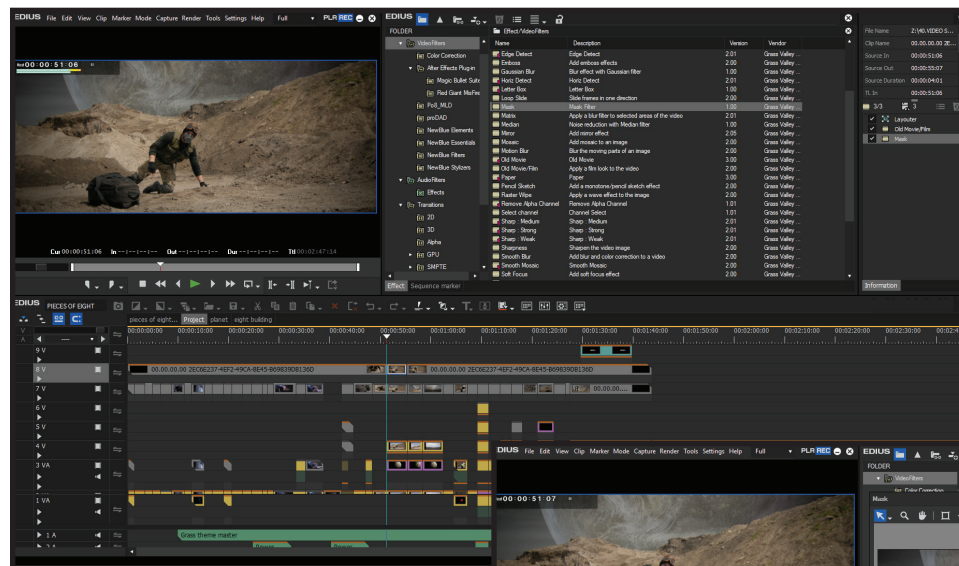


“EDIUS allows us to cut the shows fast and efficiently, yet the viewer thinks we’re switching live. That’s what makes me the most proud. When a fan who attended the show enjoys the video, I know we’ve done something right.”

Jara Wallace, director and head of post-production, TourGigs

KEY FEATURES

- Superior 4K workflow, including support for Blackmagic Design’s Deck-Link 4K Extreme, Ultra Studio 4K, AJA KONA 3G (preview only) and EDL or AAF import/export with Grass Valley HQX with DaVinci Resolve 11
- Supports third-party I/O hardware from Blackmagic Design, Matrox and AJA
- Edit media files with different resolutions — from 24x24 to 4Kx2K
- Real-time conversion of frame rates on the same timeline delivers more efficient editing into the hands of editors
- Fast, flexible user interface, including unlimited video, audio, title and graphics tracks
- Support for the latest file formats — Sony/Canon RAW, Sony XAVC (Intra/Long GOP)/XAVC S, Panasonic AVC-Ultra/AVC-Intra 422, AVC-Intra LT/LT 2K and Canon XF-AVC (import only)
- Work natively with many different video formats, including Sony XDCAM, Panasonic P2, Ikegami GF, RED, Canon XF and EOS movie formats
- Fastest AVCHD editing on the market (up to 3+ streams in real time)
- Multicam editing of up to 16 different sources simultaneously, with video output support
- Improved MPEG decoder and encoder
- Improved H.264/AVC decoder and encoder (for fast encoding of 4K XAVC)
- Accelerated 4K H.264 playback
- Optimized for fourth-generation Intel Core i architecture
- New GUI design for faster workflows
- 64-bit native processing with maximum memory access for streamlined real-time editing
- Proxy mode workflow for legacy computers helps extend their usability and increase ROI
- Supports Intel Quick Sync Video for extremely fast H.264 export (for Blu-ray Disc burning)
- Fast handling of large quantities of still image files (JPG, TGA, DPX and others)
- Primary color correction (RGB) LOG file support
- Primary color correction (RGB) Custom LUT file import
- Primary color correction (RGB) HLG and PQ gamma support
- RAW decode (Sony/Canon)
- 3-way color correction (YUV)
- Motion tracking
- High quality slow-motion (optical flow)
- Built-in image stabilization
- Direct to Blu-ray Disc and DVD timeline export
- OFX support for Magic Bullet and Sapphire plug-ins
- Ability to save a current project as a template in order to re-use preferred track settings, screen layout, etc.
- H.265/HEVC decoding support
- Support for high resolution displays

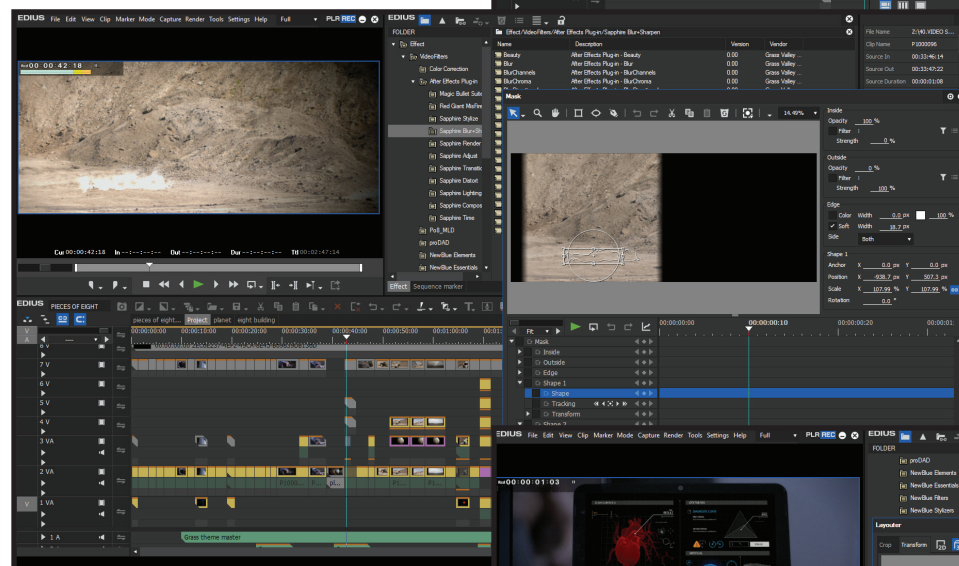


MAIN INTERFACE

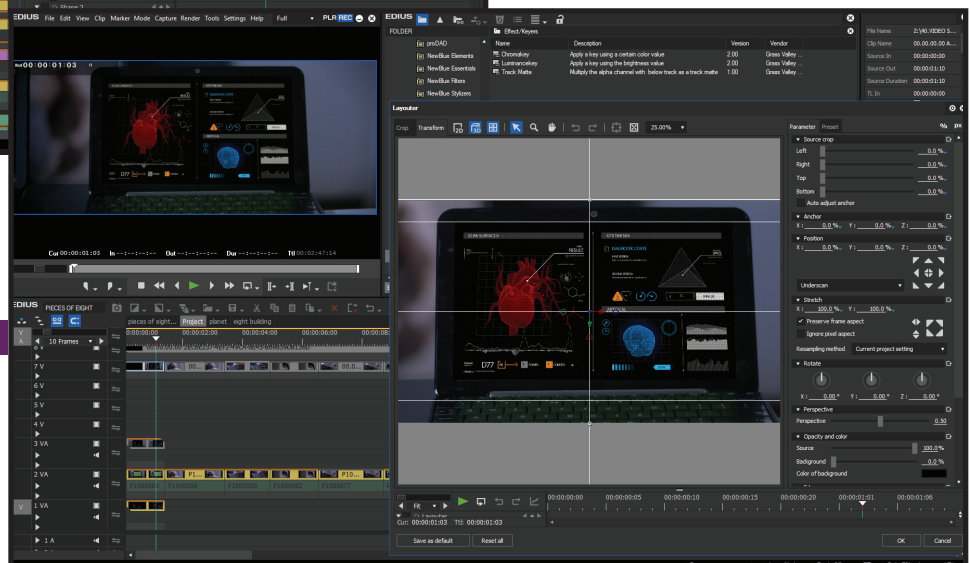
MOTION TRACKING



MASK FILTER



LAYOUTER



EDIUS 8 Nonlinear Editing Software

SPECIFICATIONS

Minimum System Requirements (standalone):

OS: Windows 7 64-bit (Service Pack 1 or later), Windows 8/8.1/10 64-bit

Note: See Memory section below for physical memory limits of each OS.

CPU: Any Intel Core 2 or Core iX CPU. Intel or AMD single core CPU with a 3 GHz processor speed or faster (multiple CPUs and/or multicore CPUs are recommended). SSE3 (Supplementary SSE3) instruction set support required.

Memory:

4 GB RAM minimum

Requirements for RAM and video memory vary depending on the project format. For SD/HD projects: 4 GB or more RAM recommended. For 4K projects: 8 GB or more RAM recommended. Maximum amount of RAM is based on the physical memory limits of each OS.

Windows 10, Enterprise and Pro, 64-bit: 512 GB

Windows 8/8.1, Enterprise and Professional, 64-bit: 512 GB

Windows 8/8.1, 64-bit: 128 GB

Windows 7, Ultimate, Enterprise, and Pro, 64-bit: 192 GB

Windows 7, Home Premium, 64-bit: 16 GB (not recommended for complex 4K projects)

Windows 7, Home Basic, 64-bit: 8 GB (not recommended for projects above HD resolution)

Project Format		RAM		Video Memory	
Resolution	depth	minimum	recommended	minimum	recommended
SD and below	8-bit	1 GB	2 GB	256 MB	512 MB
	10-bit	2 GB	4 GB	512 MB	1 GB
HD	8-bit	4 GB	4 GB	512 MB	1 GB
	10-bit	4 GB	4 GB	1 GB	2 GB
Over HD (including 4K)	8-bit	8 GB	16 GB or more	2 GB	2 GB or more
	10-bit	8 GB	16 GB or more	2 GB	2 GB or more

Graphics Card

Supporting higher resolution than 1024x768 32-bit. Direct3D 9.0c or later and PixelShader Model 3.0 or later is required

Requirements for video memory size when using GPUfx will vary depending on the project format. For 10-bit SD projects: 1 GB or more recommended, for HD/4K projects 2 GB or more recommended

Note: Requirements for video memory vary depending on the project format. See Memory section above for details.

Hard Disk

6 GB of hard disk space is required for installation

Drive with SATA/7,200 RPM or faster is required for video storage:

Available hard drive disc space should be twice the size of the file to be edited
RAID-0 is recommended for HD and above resolution editing

Hardware Support

EDIUS 8 supports the following Grass Valley hardware:

STORM 3G Elite
STORM 3G
STORM Pro
STORM Mobile
HDSPARK Pro
HDSPARK

Optical Drive

Blu-ray Disc writer is required when creating Blu-ray Discs

DVD-R/RW or DVD+R/RW drive is required when creating DVDs

Sound Card

Sound card with WDM driver support is required.

Network

Internet connection required for software license activation; thereafter Internet connection is required once per month to maintain usage.

Service and Support

90-day limited warranty.

Note: External video decks/cameras may require a USB 2.0 port for connectivity.

Updated for version 8.5, April 2017

ORDERING

EDIUS Pro 8

EDIUS Pro 8 retail packaging (pictured right). Model No. 607109

EDIUS Pro 8 serial key only. Model No. 646719

EDIUS Pro 8 Upgrade from EDIUS Pro 7.x. Model No. 607116

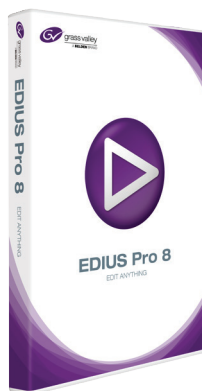
(cannot upgrade from prior versions of EDIUS, or education versions)

EDIUS Pro 8 Educational version, serial key only. Model No. 646733

(requires proof of full-time educational status and is not upgradable)

Package Contents (retail version only)

EDIUS Pro 8 installation disc (DVD-ROM)



GVB-1-0517L-EN-DS

WWW.GRASSVALLEY.COM

Join the Conversation at **GrassValleyLive** on Facebook, Twitter, YouTube and **Grass Valley - A Belden Brand** on LinkedIn.



Belden, Belden Sending All The Right Signals and the Belden logo are trademarks or registered trademarks of Belden Inc. or its affiliated companies in the United States and other jurisdictions. Grass Valley, EDIUS and STORM are trademarks or registered trademarks of Grass Valley Canada. Belden Inc., Grass Valley Canada and other parties may also have trademark rights in other terms used herein.

Copyright © 2015-2017 Grass Valley Canada. All rights reserved. Specifications subject to change without notice.